

# Storage Tanks

The low pressure storage tank consists of a pressure vessel, insulation, refrigeration unit, instrumentation, fill connections, instrumentation connections and a flanged outlet to withdraw carbon dioxide at a high rate of flow. Storage tanks are available in sizes ranging from 3/4 ton thru 60 ton.

All storage tanks are FM approved and listed for a temperature range of -10 deg F (-23 deg C) thru 120 deg F (49.9 deg C).

The storage tanks are equipped with contacts to monitor:

- High pressure (above 315 psig [2173 kPa])
- Low pressure (below 250 psig [1724 kPa])
- Power failure to compressor

Storage tanks can be provided with optional contacts to monitor:

- Low liquid level
- High liquid level

## Specifications:

### Pressure Vessel

- Designed, built and tested according to ASME (American Society of Mechanical Engineers) Boiler & Pressure Vessel Code, Section VIII, Division 1, Pressure Vessels
- Material: SA-612 normalized carbon steel
- MAWP (Maximum Allowable Working Pressure): 350 psig (2414 kPa)
- MDMT (Minimum Designed Metal Temperature): -40 deg F (-40 deg C)

### Insulation

- 4" (101.6) Polyurethane with 0.063" (1.6) aluminum outer jacket

### Piping

- Schedule 80 seamless pipe, 2000 lb. forged steel fittings, ball type valves

### Safeties

- Dual ASME approved direct spring loaded or pilot operated, sized for indoor installation

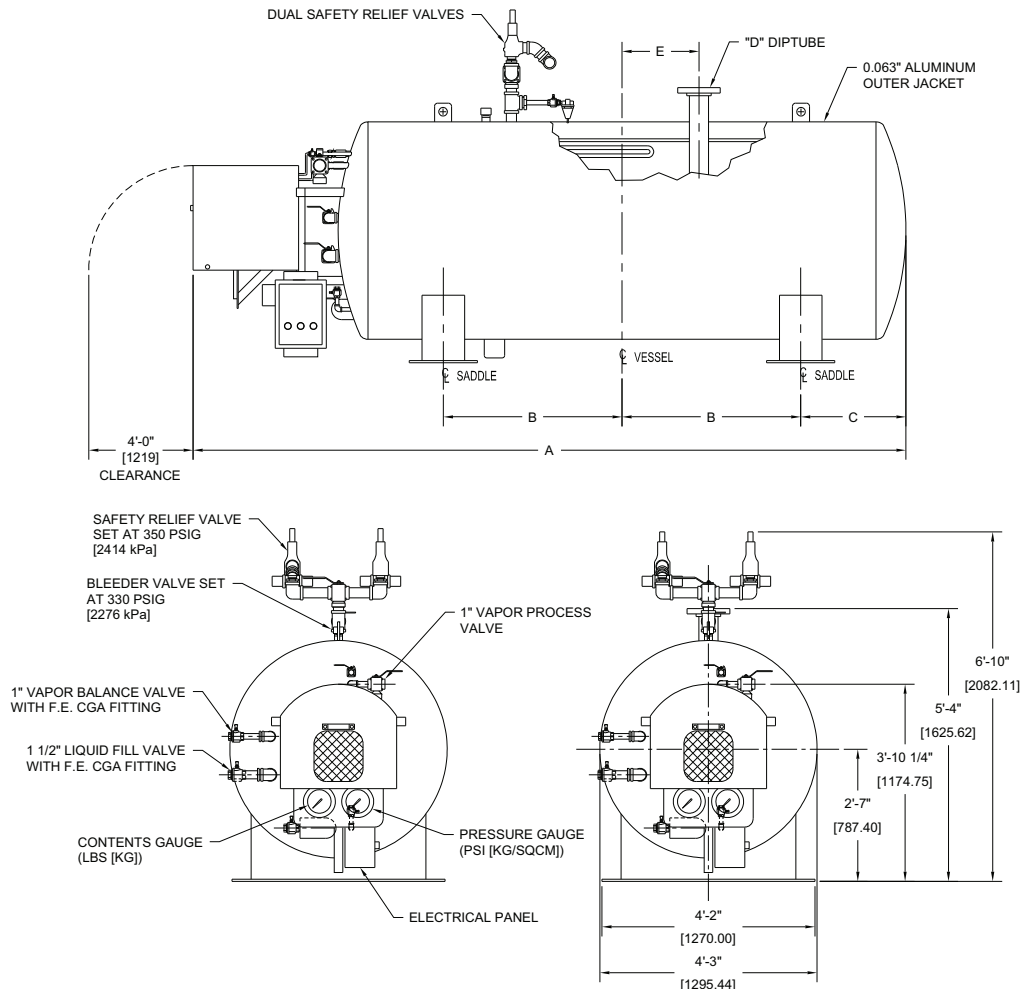
### Refrigeration

- Low-Temp air cooled condensing units
- Environmentally safe R-404A refrigerant standard
- Most electrical requirements available

### Instrumentation

- Liquid Level Gauge: Differential pressure indicator type with 6" (152.4) dial
- Pressure Gauge: 0-600 psig (0-42.2 Kg/cm<sup>2</sup>) with 6" (152.4) dial
- Audible and visual high/low pressure alarm

# Low Pressure CO<sub>2</sub> Fire Protection Storage Tanks (continued)



Size (Tons)	Part Number	A	B	C	D	E	Weight Empty
3/4	990460	7'-11" (2413)	6 7/8" (175)	1'-5 1/4" (438)	3" (76)	0" (0)	1,200 lbs 544 kg
1 1/2	990461	4'-8" (1422)	1'-4" (406)	2'-0" (610)	3" (76)	4" (102)	3,500 lbs 1,588 kg
2	990462	12'-8 1/2" * (3874)	2'-1 1/2" (648)	2'-1" (635)	3" (76)	6 1/2" (165)	3,500 lbs 1,588 kg
2 3/4	990463	14'-4 1/2" * (4382)	3'-6" (991)	2'-1 1/2" (648)	3" (76)	0" (0)	4,000 lbs 1,814 kg

\* add 9" [229] for optional 3 phase refrigeration unit